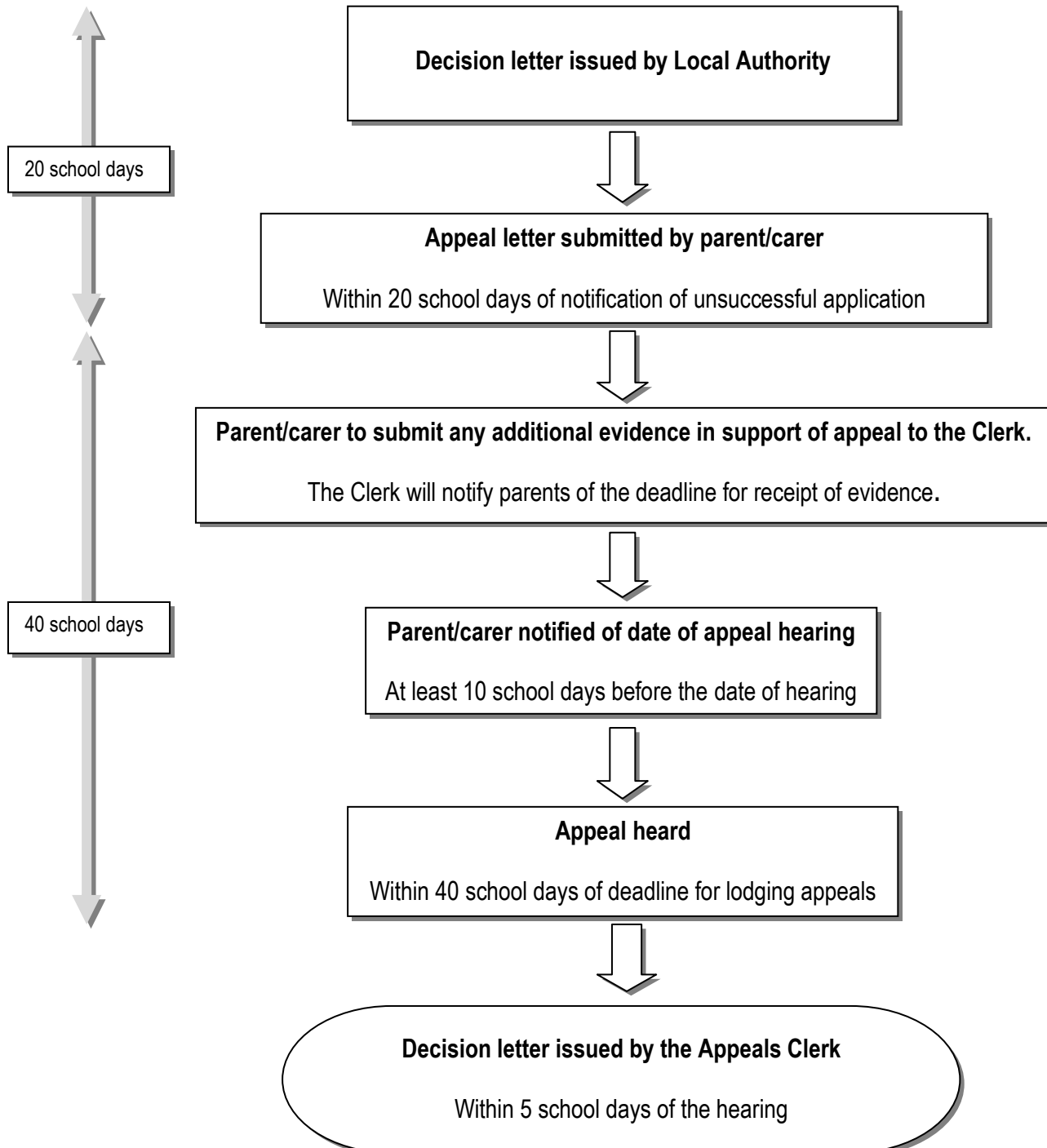




## SCHOOL ADMISSION APPEALS

Timetable For Appeals Relating To:

### ADMISSION IN THE NORMAL ROUND

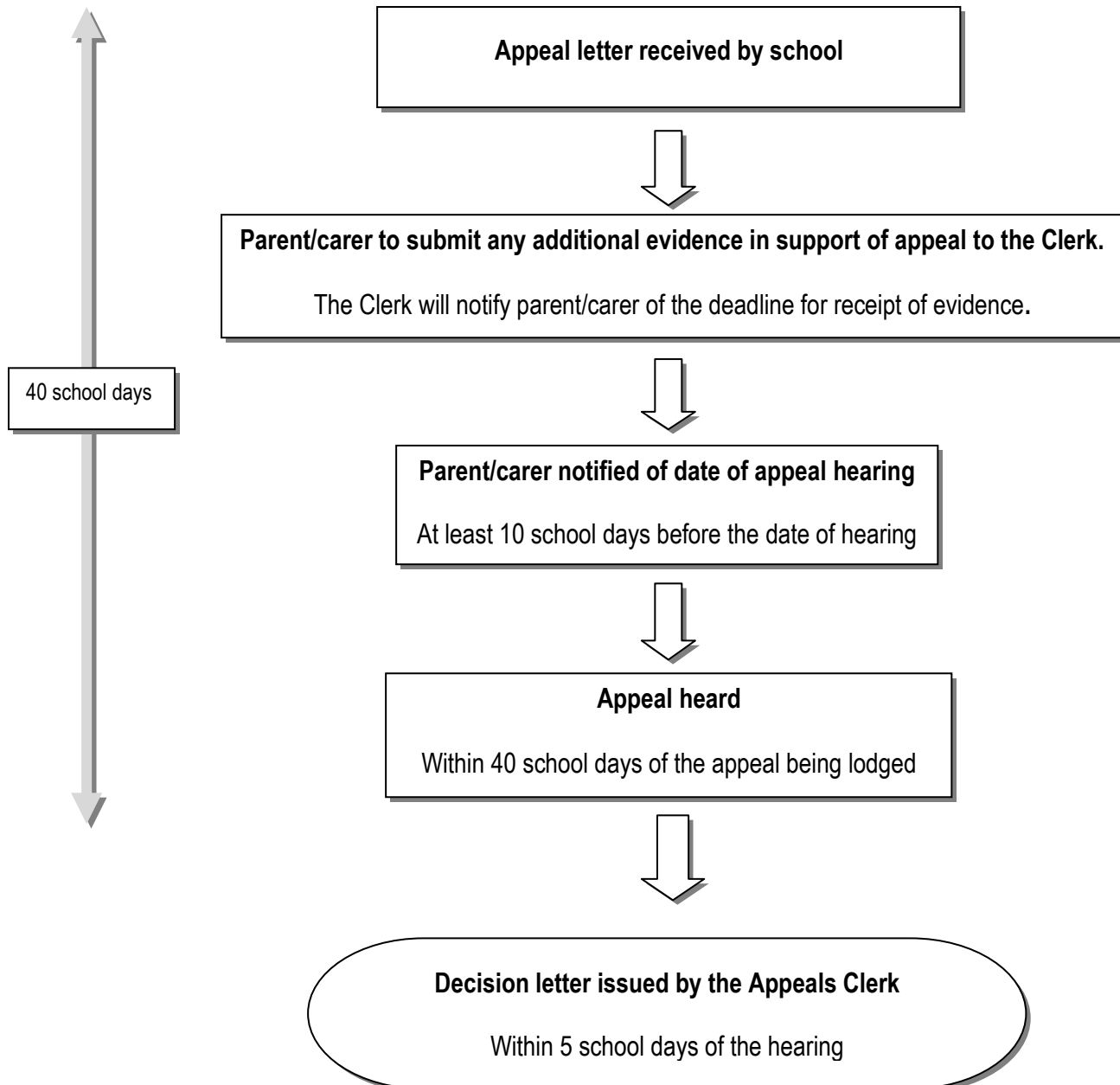




## SCHOOL ADMISSION APPEALS

Timetable For Appeals Relating To:

### APPEAL LETTERS SUBMITTED AFTER THE DEADLINE FOR LODGING APPEALS





## SCHOOL ADMISSION APPEALS

Timetable For Appeals Relating To:

**LATE APPLICATIONS IN THE NORMAL ROUND**  
**or 'IN-YEAR' APPLICATIONS**

